



INDOFINE Chemical Company, Inc.

121 Stryker Lane, Bldg. 30, Suite 1 • Hillsborough, NJ 08844 • U.S.A.

Phone: (908) 359-6778 • FAX: (908) 359-1179

website: www.indofinechemical.com

e-mail: chemical@indofinechemical.com

CERTIFICATE OF ANALYSIS

Catalog number: 22-315

Product name: 4,2',5'-TRIMETHOXYCHALCONE

Lot Number: 000210

Chemical Formula: C₁₈H₁₈O₄

Molecular Weight: 298.34

Melting Point: 96-97°C

Appearance: Light yellow shining powder

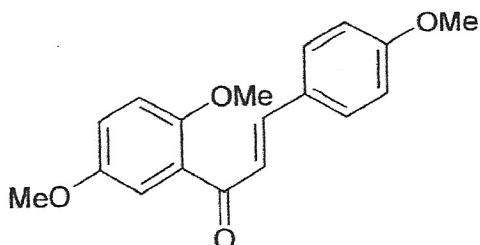
TLC: Hexane : Ethyl acetate (7:3)

Solubility: Soluble in chloroform

NMR Spectrum: Enclosed

Storage: Cool dry place

Purity (HPLC): 99.65%





INDOFINE Chemical Company, Inc.

121 Stryker Lane, Bldg. 30, Suite 1 • Hillsborough, NJ 08844 • U.S.A.

Phone: (908) 359-6778 • FAX: (908) 359-1179

website: www.indofinechemical.com

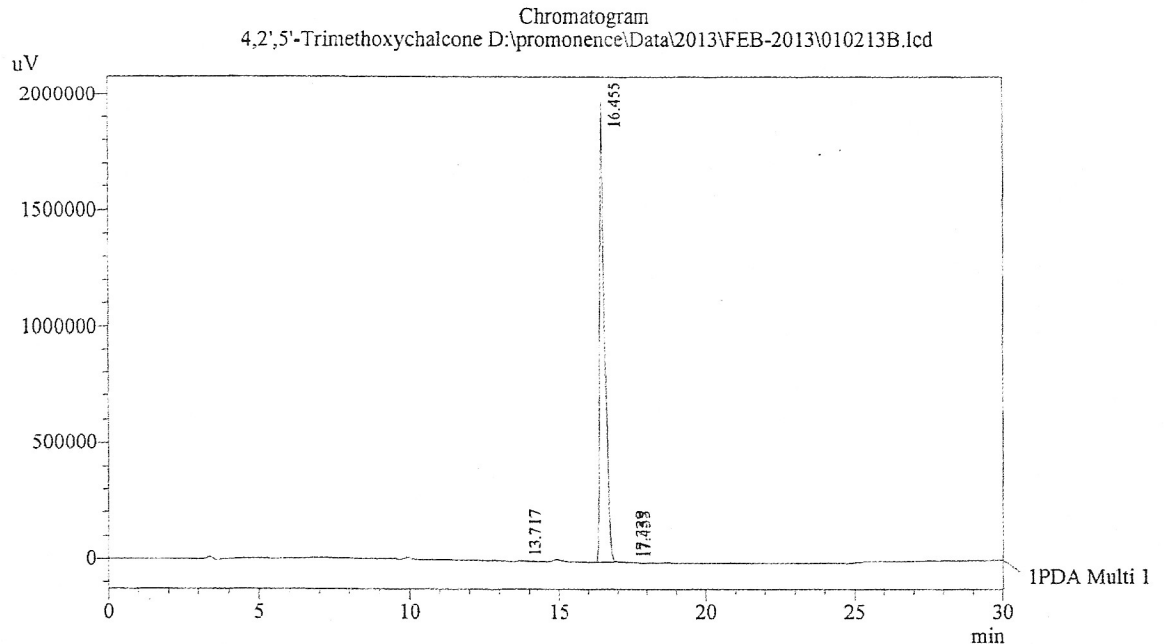
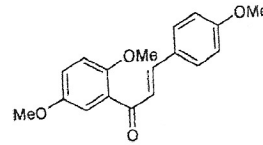
e-mail: chemical@indofinechemical.com

HPLC ANALYSIS

Acquired by : Sanjeev
Sample Name : 4,2',5'-Trimethoxychalcone
Sample ID : Lot No- 000210
Injection Volume : 20 uL
Data Filename : 010213B.lcd
Method Filename : Linear Gradient.M.lcm

Catalog No.: 22-315
Product name: 4,2',5'-Trimethoxychalcone
Lot No.: 000210

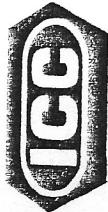
Column : LUNA C-18(2), (250mm x4.6mm 5.0µ)
Flow : 1.000 mL/min.
Mobile Phase : A(0.05% TFA in water) B(Acetonitrile)
0.01 90 10
12.0 10 90
20.0 10 90
23.0 90 10
30.0 90 10



PeakTable

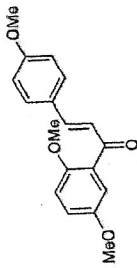
PDA Ch1 230nm 4nm

Peak#	Name	Ret. Time	Area	Area %	Relative Retention Time
1	RT:13.717	13.717	55530	0.24	0.83
2	4,2',5'-Trimethoxy chalcon	16.455	23387674	99.65	1.00
3	RT:17.339	17.339	7796	0.03	1.05
4	RT:17.455	17.455	18183	0.08	1.06
Total			23469183	100.00	



INDOFINE Chemical Company, Inc.
 121 STRYKER LANE
 BLDG. 30, SUITE 1
 HILLSBOROUGH, NJ 08844

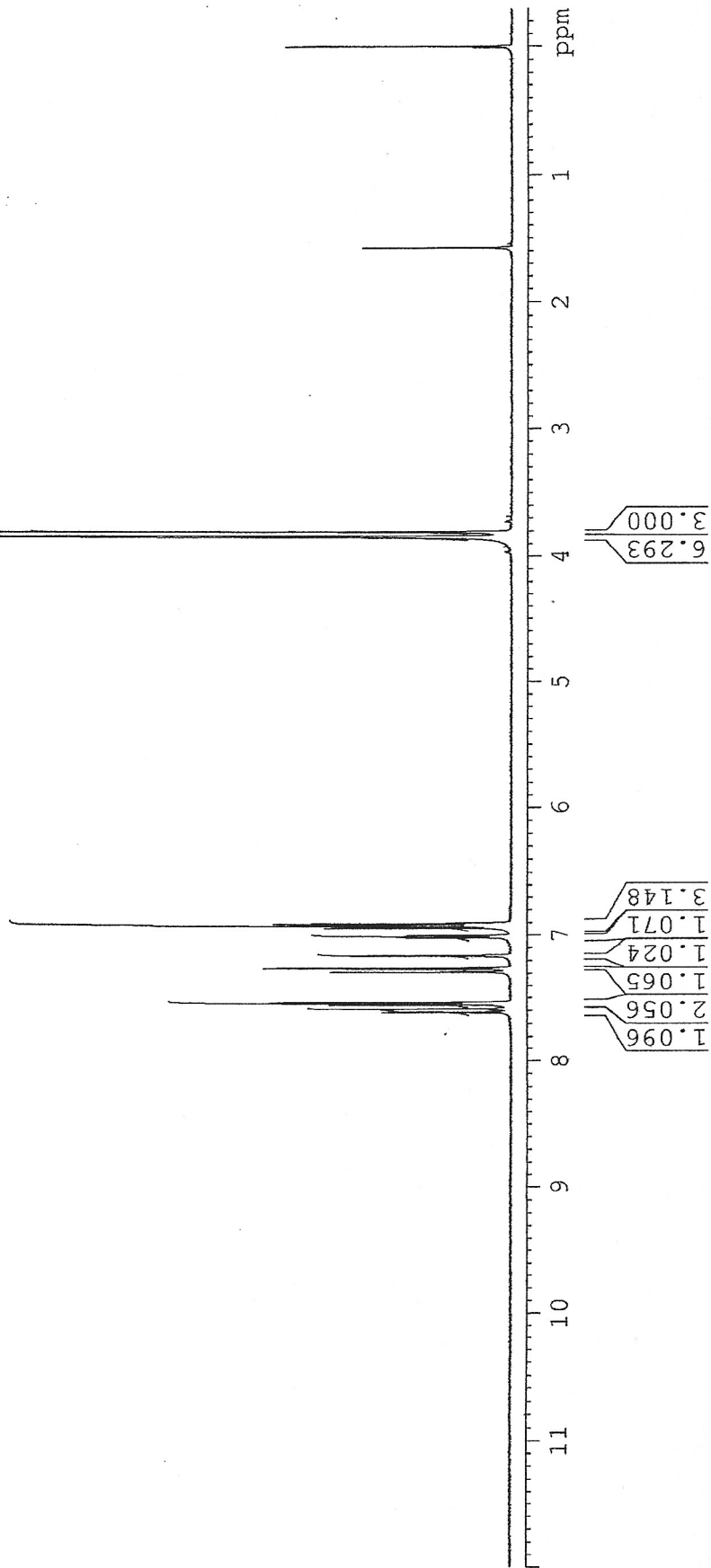
Catalog No.: 22-315
 Product name: 4,2',5'-Trimethoxychalcone
 Lot No.: 000210



SOLVENT CDC13
 NS 8
 DS 0
 SMH 10288.065 Hz
 FIDRES 0.342958 Hz
 AQ 1.4579529 sec
 RG 2050
 DW 48.500 usec
 DE 6.00 usec
 TE 298.9 K
 D1 1.50000000 sec
 TD0 1

1H IN CDCL3
 AVANCE-600

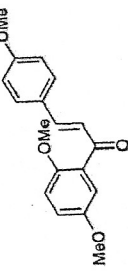
==== CHANNEL f1 =====
 NUC1 1H
 P1 8.30 usec
 PL1 -1.00 dB
 PL1W 15.17893314 W
 SF01 600.3345471 MHZ
 SI 32768
 SF 600.3300158 MHZ
 WDW EM
 SSB 0
 LB 0.30 Hz
 GB 0
 PC 1.00





INDOFINE Chemical Company, Inc.
 121 STRYKER LANE
 BLDG. 30, SUITE 1
 HILLSBOROUGH, NJ 08844

Catalog No.: 22-315
 Product name: 4,2',5'-Trimethoxychalcone
 Lot No.: 000210



SOLVENT CDC13
 NS 8
 DS 0
 SWH 10288.065 Hz
 FIDRES 0.342958 Hz
 AQ 1.4579529 sec
 RG 2050
 DW 48.600 usec
 DE 6.00 usec
 TE 298.9 K
 DI 1.5000000 sec
 TD0 1

1H IN CDCL3
 AVANCE-600

***** CHANNEL f1 *****
 NUC1 1H
 P1 8.30 usec
 PL1 -1.00 dB
 PL1W 15.17893314 W
 SFO1 600.3345471 MHz
 SI 32768
 SF 600.3300158 MHz
 WDW EM
 SSB 0
 LB 0.30 Hz
 GB 0
 PC 1.00

